

Thursday, October 23, 2008



Subscribe **INFORUM** News

marketplace

add your business

Arts & Entertainment | Food & Dining | Services  
Retail | Automotive | Travel & Accommodations

Log In | Register

Site  Classifieds  Web

Search

jobsHQ

carsHQ

homesHQ

apartmentsHQ

Classifieds Northland  
Outdoors AGWEEK  
Home News Associated  
Press Weather Sports  
Opinion Life Columnists  
Business Legislature Farm  
Video Multimedia Movie  
Times

Mobile Celebrations  
Obituaries Photography  
Births Calendar Dining  
Special Projects Outdoors  
Corrections

Special Features  
Personals Internet Access  
Marketplace  
Newspaperprints Travel

Member Center Archive  
Company Site Ethics Code  
Contact Us InfoGuide  
Newspapers in Education  
Public Notices Resources  
Subscribe/  
Customer Care Yellow  
Pages

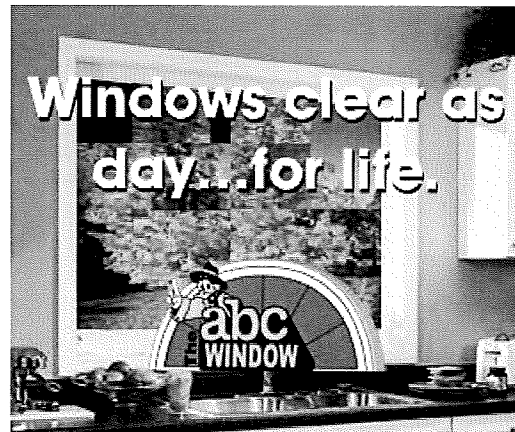
RSS Feeds



# \$4B wind farm proposed

## Dale Wetzel , Associated Press Published Thursday, October 23, 2008

advertisement



BISMARCK – A proposed 2,000-megawatt wind farm in northwestern North Dakota would be one of the world’s largest energy projects, although new electric transmission lines are needed for it to be built, state regulators say.

“The numbers that you see being thrown around as potential development in North Dakota are truly eye-popping,” Public Service Commissioner Tony Clark said Wednesday.

Hartland Wind Farm LLC is planning the \$4 billion project in Ward, Burke and Mountrail counties in northwestern North Dakota. The company wants to start construction in the fall of 2010.

It will be built in stages and ultimately should have 1,333 wind towers spread over 720 square miles, said Craig Fink, one of the project’s developers. The Public Service Commission accepted a letter of intent for the project Wednesday.

Its territory is bordered by Canada to the north, the Des Lacs River to the east, U.S. Highway 2 to the south and the western border of Burke and Mountrail counties, Public Service Commission filings say.

Text Size: A A A

Print this article

Email this article

Most popular articles

Purchase a print

E-mail News Alerts

Mobile News Alerts

### Save and share

Bookmark on del.icio.us

Share on Facebook

Share with Google



Accounting Assistant We are a growing local telecommunicat...

P/T cleaning help. \$8-\$9/hr. Exp. pref. M-F morning & after...

Part-Time Coffee/ Sandwich Shop Scheels is currently hiring ...

Parts Personnel Do you have experience working with parts? ...

SALES SPECIALIST Cleary Building Corp., a national leader in...

view all HotJobs »

Featured Employer



view employer jobs »



## TopVehicles

The commission's president, Susan Wefald, said both the Hartland project and a separate, 1,000-megawatt wind farm planned for Oliver and Morton counties will require building new electric transmission lines to carry the power.

"Planning and construction of a major transmission line can take a number of years," Wefald said.

FPL Energy LLC, of Juno Beach, Fla., is developing the 1,000-megawatt farm, which will cost about \$2 billion to build.

Fink said Hartland expects to file its formal application for a siting permit for its wind farm in June 2009. The company would like to have the permit in hand by April 2010, and start putting up wind towers in the fall, he said.

Separately, the Public Service Commission voted to allow Sequoia Energy U.S., a unit of the Sequoia Energy Inc. of Winnipeg, Manitoba, to immediately file a request for a siting permit for a 150-megawatt wind farm in Rolette and Towner counties.

The Border Winds project includes 68 turbines and will cost about \$300 million to build, a company filing said. Sequoia wants to begin construction in the fall of 2009.

At present, the nation's largest operating wind farm is a 736-megawatt project near Abilene, Texas, called the Horse Hollow Energy Center. Projects of 1,000 megawatts or more are on the drawing boards, said Christine Real de Azua, a spokeswoman for the American Wind Energy Association in Washington, D.C.

Texas oilman T. Boone Pickens, who has gained public attention for his plan to displace imported oil with wind energy and natural gas, is planning a 4,000-megawatt wind farm in four counties in the Texas Panhandle.

Royal Dutch Shell PLC and TXU Corp., a Texas energy company, are separately developing a 3,000-megawatt project southeast of Amarillo, Texas.

"With anything that size, they are dependent on more transmission," Real de Azua said. "They're looking big, they're ambitious, and these projects are feasible, but the missing component is the need for new transmission to bring that wind power to market."



Hyundai Santa Fe  
\$9,950 \$9,950



**Wind Farms**

Wind farm assessment & feasibility Permits, Engineering, Construction  
[www.2JBS.com](http://www.2JBS.com)

**1000W Wind Turbine \$199**

Seem Impossible? Find Out How You Can Save Thousands in Energy Costs  
[www.GreenToolman.com](http://www.GreenToolman.com)

**Community Wind Farms**

We develop wind projects for local communities.  
[www.NationalWind.com](http://www.NationalWind.com)

**Investing in Wind Power**

20% of US Electricity From Wind by 2030. Catch the Early Profits Here.  
[www.GreenChipStocks.com/Wind](http://www.GreenChipStocks.com/Wind)

**Wind Energy News**

Your Premier Team For Wind Energy News. Visit FOX Business Today!  
[www.FOXBusiness.com](http://www.FOXBusiness.com)